

Product Fact Sheet

Life's Memories®
— Memorials —

Cremation Estates



SPECIFICATION (Can be adjusted to meet customer specifications)

Granite Footing: Metric 719 mm x 500 mm
Imperial 28.3" x 19.7"

Granite Colour: Available in multiple colours
(shown in Cherry Blossom)

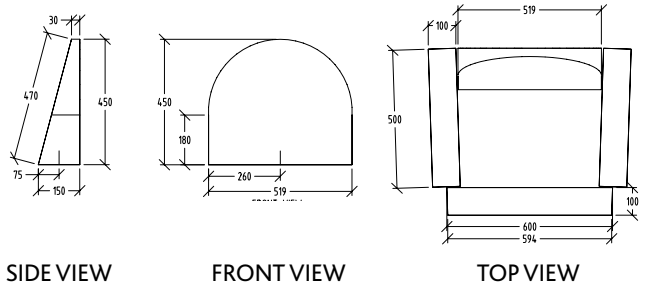
**Life's Memories
Glass Plaque:** made with Dupont Sentry
Glass Expressions SGX

LM SGX Plaque: Size to customers
specification

Weight: Metric 130 kg
Imperial 207 lb

Finish: 11.52 mm (.45")

MEMORIAL SIZE SPECIFICATION



Trademarks

Life's Memories : DuPont : Sentry Glass Expressions
The information contained in this fact sheet is
protected by copyright and remains at all times
the intellectual Property of Life's Memories Pty Ltd.
Any copying or distribution of this information
must be consented to in writing by Life's Memories.

Version: 1 2009/2010

Life's Memories - Corporate Services
Suite 1, 250 Glen Osmond Road, Fullarton,
Adelaide, South Australia 5063

Service Centres
Blair Athol, Adelaide, South Australia
Sydney, New South Wales, Australia
Los Angeles, California, United States of America
Portland, Oregon, United States of America

Telephone [Aust] 1300 881 085
International + 61 8 8274 5420

Web www.lifememories.com.au
Email contact@lifememories.com.au