

Product Fact Sheet

Life's Memories®
— Memorials —

Niche Columns - two sided/offset



SPECIFICATION

(Can be adjusted to meet customer specifications)

Granite Footing: Metric 830 mm x 235 mm
Imperial 32.7" x 9.3"

Granite Colour: Available in multiple colours
(shown in Green)

Life's Memories Glass Plaque: made with Dupont Sentry Glass Expressions SGX

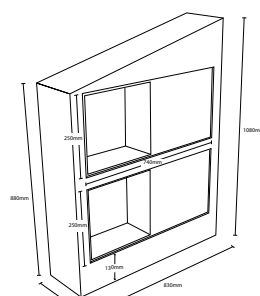
LM SGX Plaque: Metric 730 mm x 340 mm
Imperial 28.7" x 13.4"

Weight: 2 high 2 sided - 600 kg
Imperial 1323 lb

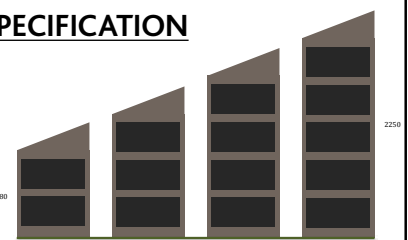
Finish: 11.52 mm (.45")



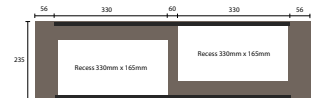
MEMORIAL SIZE SPECIFICATION



ISOMETRIC VIEW



MULTIPLE HEIGHTS COMPLEX
Available in 4, 6, 8, 10 double niches



TOP VIEW

Trademarks

Life's Memories : DuPont : Sentry Glass Expressions
The information contained in this fact sheet is protected by copyright and remains at all times the intellectual Property of Life's Memories Pty Ltd. Any copying or distribution of this information must be consented to in writing by Life's Memories.

Version: 1 2009/2010

Life's Memories - Corporate Services
Suite 1, 250 Glen Osmond Road, Fullarton,
Adelaide, South Australia 5063

Service Centres
Blair Athol, Adelaide, South Australia
Sydney, New South Wales, Australia
Los Angeles, California, United States of America
Portland, Oregon, United States of America

Telephone [Aust] 1300 881 085
International + 61 8 8274 5420

Web www.lifememories.com.au
Email contact@lifememories.com.au